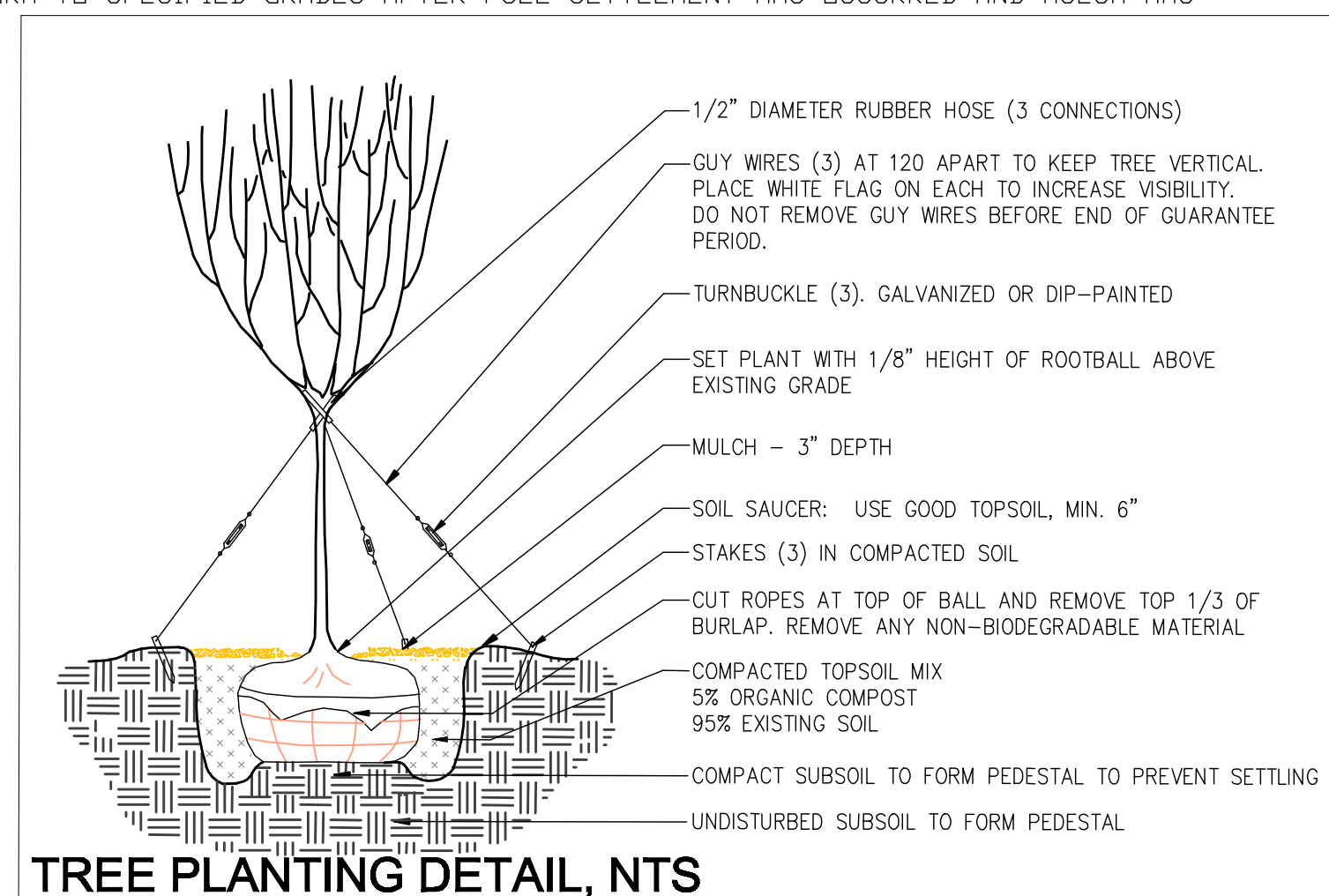


GENERAL PLANTING NOTES

- THE QUANTITIES INDICATED ON THE MATERIAL SCHEDULE ARE PROVIDED TO BE CORRECT. IN THE EVENT OF A DISCREPANCY, THE PLANTING PLAN WILL TAKE PRECEDENCE OVER THE MATERIAL SCHEDULE. THE CONTRACTOR SHALL BE RESPONSIBLE FOR HIS/HER OWN QUANTITY CALCULATIONS AND THE LIABILITY PERTAINING TO THESE QUANTITIES AND ANY OTHER RELATED CONTRACT DOCUMENTS AND/OR PRICE QUOTATIONS.
- THE CONTRACTOR SHALL NOT CHANGE OR SUBSTITUTE PLANT VARIETIES OR SPECIES WITHOUT THE WRITTEN PERMISSION OF THE LANDSCAPE ARCHITECT.
- ALL LANDSCAPE MATERIAL INSTALLATION SHALL CONFORM TO THE CURRENT STANDARDS OF THE AMERICAN ASSN OF NURSERYMEN AND IS SUBJECT TO THE APPROVAL OF THE LANDSCAPE ARCHITECT.
- THE CONTRACTOR IS RESPONSIBLE FOR COMPLYING WITH ALL LOCAL, STATE, AND FEDERAL CONSTRUCTION CODES AND SECURING ALL NECESSARY PERMITS.
- THE CONTRACTOR IS RESPONSIBLE FOR THE LOCATION OF ALL UNDERGROUND UTILITIES PRIOR TO CONSTRUCTION, AND THE REPAIR OF ANY DAMAGE INCURRED DURING THE EXECUTION OF THE WORK.
- THE CONTRACTOR SHALL MAKE PERIODIC INSPECTIONS OF THE PROJECT DURING THE GUARANTEE PERIODS TO SATISFY HIMSELF/HERSELF THAT ESTABLISHMENT AND RATE OF GROWTH ARE ADEQUATE. ANY METHODS OR PRODUCTS DEEMED NOT NORMAL OR ARE DETRIMENTAL TO GOOD PLANT GROWTH SHALL BE REPORTED TO THE LANDSCAPE ARCHITECT IN WRITING. FAILURE TO INSPECT AND REPORT WILL BE INTERPRETED AS APPROVAL, AND THE CONTRACTOR SHALL BE RESPONSIBLE FOR ANY AND ALL REPLACEMENTS.
- REFER TO THE GRADING PLAN FOR ROUGH GRADES OF PLANTING BEDS. FINAL GRADES ARE SUBJECT TO APPROVAL BY LANDSCAPE ARCHITECT.
- PLANT MATERIAL TO BE PLACED AS SHOWN ON PLANTING PLANS. ALL PLANT MATERIAL SHALL BE PLACED IN POSITION AND SUBJECTED TO THE APPROVAL OF THE LANDSCAPE ARCHITECT PRIOR TO BACKFILLING AND MULCHING.
- PLANTING PLAN IS FOR THE LOCATION AND IDENTIFICATION OF VEGETATION ONLY. NO OTHER WORK IS TO BE PERFORMED BASED ON THIS PLAN.

PLANTING SHRUBS AND PERENNIALS

- ALL PLANTS MUST BE CONTAINER GROWN OR BALLED & BURLAPPED AS SHOWN ON PLAN. NO WILD-DUG MATERIAL SHALL BE USED.
- ROOTBALLS SHALL BE LOOSENEED AFTER REMOVAL FROM CONTAINER, BEFORE PLANTING
- MULCHING: IMMEDIATELY AFTER PLANTING WORK HAS BEEN COMPLETED, PROVIDE A MINIMUM DEPTH OF 3" EXCEPT IMMEDIATELY AROUND PLANTS AS SPECIFIED IN DETAILS. MULCH SHALL BE TRIPLE SHREDDED HARDWOOD MULCH OR AGED LEAF MOULD WITH NO MORE THAN 10% WOODY MATERIAL AND NO INORGANIC MATTER. A SAMPLE OF MULCH SHALL BE PROVIDED TO LANDSCAPE ARCHITECT FOR APPROVAL BEFORE INSTALLATION. WATER: SOAK ALL PLANTS IMMEDIATELY AFTER PLANTING, CONTINUE WATERING THEREAFTER AS NECESSARY UNTIL MULCHING IS COMPLETE.
- SMOOTH PLANTING AREAS TO CONFORM TO SPECIFIED GRADES AFTER FULL SETTLEMENT HAS OCCURRED AND MULCH HAS BEEN APPLIED.

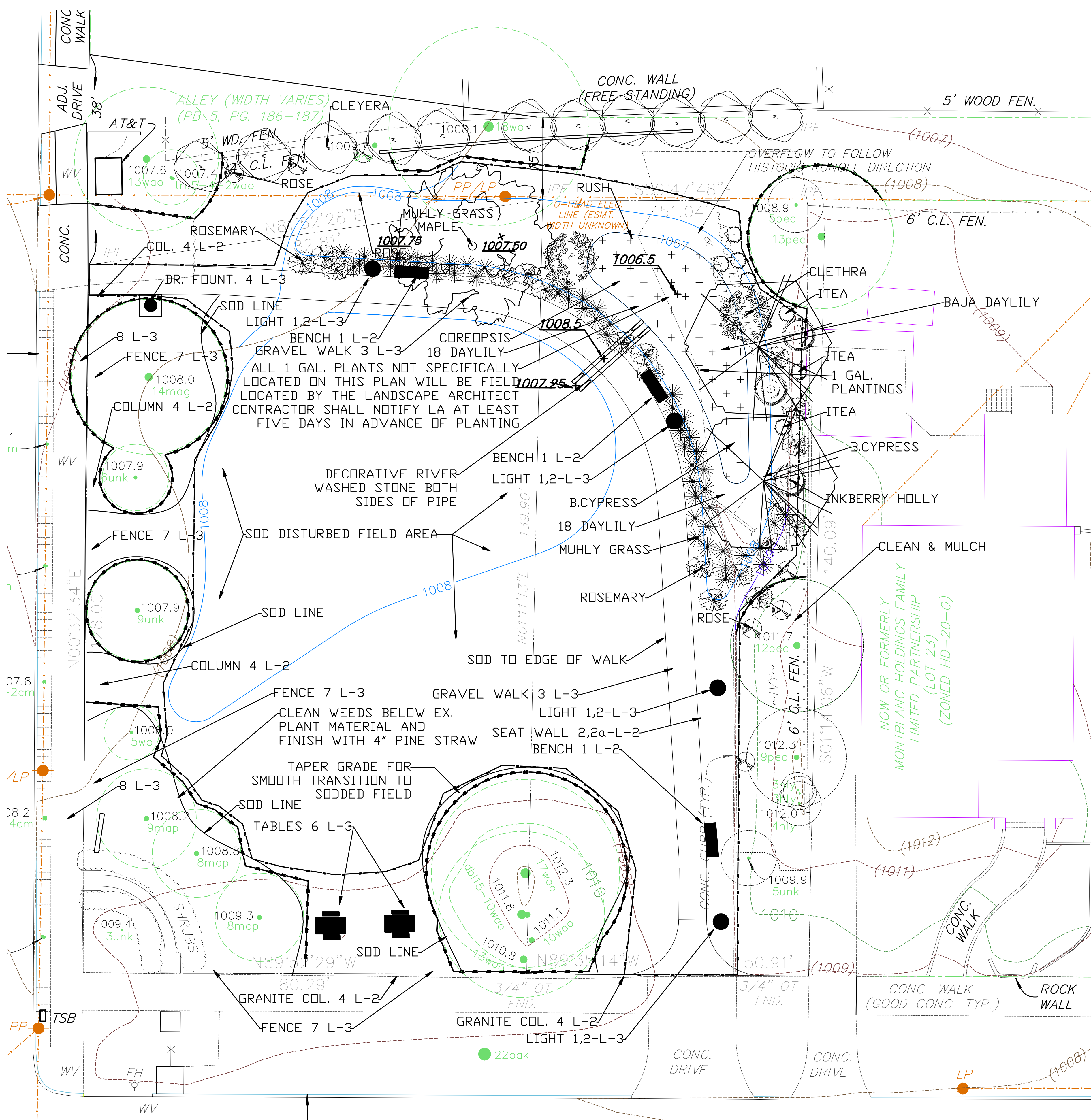


TREE PLANTING DETAIL, NTS

COMMON NAME	BOTANICAL NAME	QNTY.	
TREES			
BALD CYPRESS	TAXODIUM DISTICHUM	02	2.5" CAL
RED SUNSET RED MAPLE	ACER RUBRUM RED SUNSET	01	2.5" CAL.
SHRUBS			
HUMMINGBIRD CLETHRA	CLETHRA ALNIFOLIA "HUMMINGBIRD"	02	5 GAL
INKBERRY	ILEX GLABRA	03	7 GAL
H. GARNET ITEA	ITEA VIRGINICA "HENRY'S GARNET"	06	7 GAL
PERENNIALS AND GRASSES			
THREADLEAF BLUESTAR	AMSONIA HUBRECHTII	36	1 GAL
BUTTERFLY WEED	ASCLEPIAS TUBEROSA	36	1 GAL
THREADLEAF COREOPSIS	COREOPSIS VERTICILLATA	36	1 GAL
CONEFLOWER	ECHINACEA PURPUREA	36	1 GAL
'BAJA' DAY LILLY	HEMEROCALIS 'BAJA'	36	1 GAL
'STELLA D'ORO' DAY LILLY	HEMEROCALIS X 'STELLA D' ORO"	36	1 GAL
COMMON RUSH	JUNCUS EFFUSIS	36	1 GAL
PINK MUHLY GRASS	MUHLENBERGIA CAPILLARIS	52	1 GAL
LITTLE BLUE STEM	SCHIZACHYRIUM SCOPARIUM	12	1 GAL
UPRIGHT ROSEMARY	ROSEMARY OFFICIALIS	17	1 GAL
KNOCKOUT ROSE PINK	ROSEA SPP KNOCKOUT	07	1 GAL
JAPANESE CELYERA	CLEYERA JAPONICA	11	7 GAL

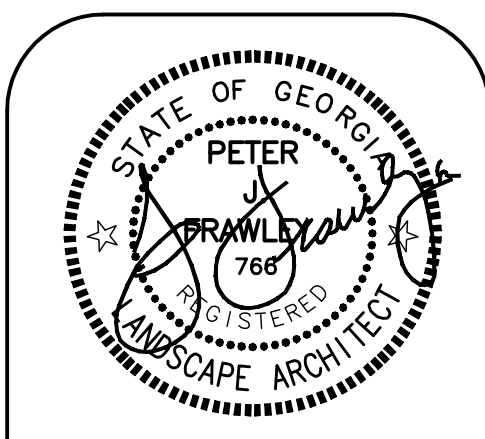
MAINTENANCE

- THE CONTRACTOR IS RESPONSIBLE FOR MAINTAINING ALL PLANTING (INCLUDING, BUT NOT LIMITED TO WATERING, MULCHING, PRUNING, RESETTING) OF PLANTING AREAS AND LAWNS UNTIL THE WORK IS ACCEPTED IN TOTAL BY CLIENT AND LANDSCAPE ARCHITECT.
- THE CONTRACTOR SHALL COMPLETELY GUARANTEE ALL PLANT MATERIAL FOR A PERIOD OF ONE YEAR BEGINNING AT THE DATE OF FINAL ACCEPTANCE. THE CONTRACTOR SHALL PROMPTLY MAKE REPLACEMENTS BEFORE OR AT THE END OF THE GUARANTEE PERIOD, AS PER DIRECTION OF OWNER OR LANDSCAPE ARCHITECT.
- REPLACEMENTS:** MATCH ADJACENT SPECIMENS OF SAME SPECIES. REPLACEMENTS ARE SUBJECT TO ALL REQUIREMENTS STATED IN THE CONTRACT DOCUMENTS AND ARE SUBJECT TO INSPECTION BY LANDSCAPE ARCHITECT PRIOR TO DIGGING.
- REPAIR GRADES, LAWN AREAS, PAVING AND ANY OTHER DAMAGE RESULTING FROM REPLACEMENTS PLANTING OPERATIONS, AT NO ADDITIONAL COST TO THE OWNER.
- REPLACEMENTS MADE DURING THE WARRANTY PERIOD OR FOLLOWING INSPECTION FOR FINAL ACCEPTANCE WILL CARRY ON ADDITIONAL ONE YEAR WARRANTY BEGINNING AT THE TIME OF REPLACEMENT.



REVISIONS:

DATE	DESCRIPTION
12/18/09	#1
--	--
--	--
--	--
--	--
--	--
--	--
--	--
--	--



FRAWLEY ASSOCIATES, LLC.
 LANDSCAPE ARCHITECTS
 675 SEMINOLE AVE (SUITE 101)
 ATLANTA, GA 30307 (404) 874-5091

ST. CHARLES RAIN GARDEN
 1076/1082 ST. CHARLES PL.
 ATLANTA, GEORGIA 30306

PLANTING PLAN

SCALE: 1" = 10'

DATE: 11-08-10

PROJECT: FA-9011

SHEET
L-1
 SHEET 5 OF 6