

THIS BLOCK RESERVED FOR THE CLERK OF THE SUPERIOR COURT.

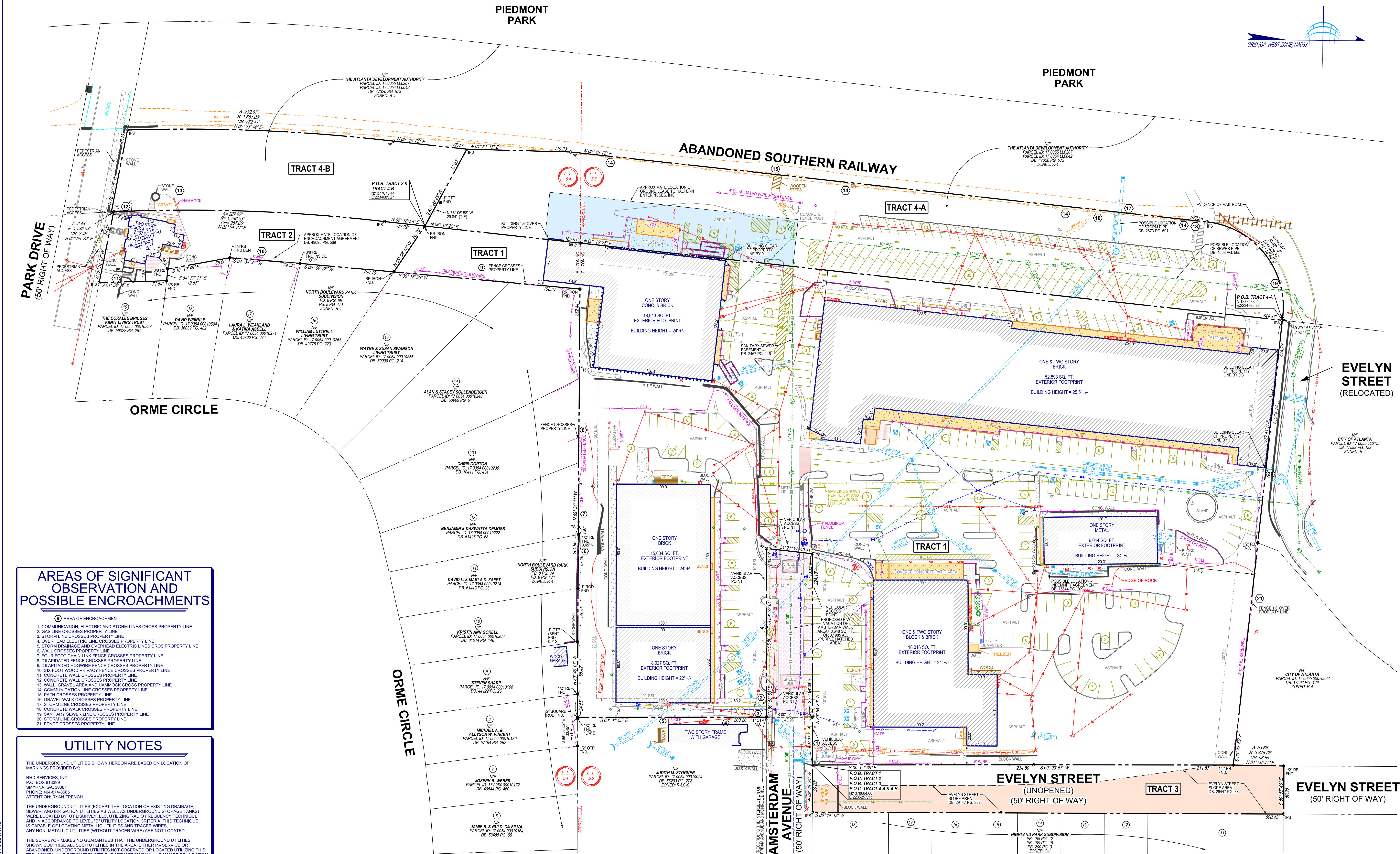
AREA TABLE	
TRACT 1:	358,512 SQ.FT. OR 8.2303 AC.
TRACT 2:	18,558 SQ.FT. OR 0.4260 AC.
TRACT 3:	25,541 SQ.FT. OR 0.5863 AC.
TRACT 4-A:	82,841 SQ.FT. OR 1.9018 AC.
TRACT 4-B:	29,840 SQ.FT. OR 0.6850 AC.
TOTAL:	515,292 SQ.FT. OR 11.8294 AC.

ABBREVIATIONS			
A	ARC LENGTH	IPS	IRON PIN SET (APPED)
AC	ACRE	N/P	NEW OR FORMERLY
AE	ACCESS EASEMENT	OTB	OPEN TOP PIPE
BBL	BUILDING SETBACK LINE	P/B	PLAT BOOK
BW	BARB WIRE	P/B	PLAT BOOK
CH	CHAIN LINK FENCE	POB	POINT OF BEGINNING
CLF	CHAIN LINK FENCE	POC	POINT OF COMMENCEMENT
CMF	CONCRETE MONUMENT FOUND	R	RADIUS LENGTH
CMP	CORRUGATED METAL PIPE	(R)	RECORD DISTANCE
CONC	CONCRETE	R/W	RIGHT OF WAY MONUMENT
CRIMP	CRIMP TOP PIPE	R/W MON	RIGHT OF WAY MONUMENT
DB	DEED BOOK	REAR	REAR
DIP	DUCTILE IRON PIPE	RCP	REINFORCED CONCRETE PIPE
FDC	FIRE DEPARTMENT CONNECTION	SDE	STORM DRAINAGE EASEMENT
FND	FOUND	SQ.FT.	SQUARE FEET
HDPPE	HIGH DENSITY POLYETHYLENE PIPE	SSE	SANITARY SEWER EASEMENT
HPF	IRON PIN FOUND	WPF	WOOD PRIVACY FENCE

LEGEND			
	CURB AND GUTTER (C&G)		IRRIGATION CONTROL VALVE (ICV)
	FENCE		FIRE HYDRANT (FH)
	HANDRAIL		WATER VALVE (WV)
	STORM DRAIN LINE		WATER METER (WM)
	SANITARY SEWER		FIRE DEPT. CONNECTION (FDC)
	WATER LINE		WATER VALVE MARKER
	GAS LINE		TRANSFORMER BOX (TX)
	UNDERGROUND POWER LINE		AIR CONDITIONER (AC)
	OVERHEAD POWER LINE		ELECTRIC METER (EM)
	UNDERGROUND COMMUNICATION		ELECTRIC UTILITY
	TOPOGRAPHIC CONTOUR		GREASE TRAP (GT)
	PROPERTY LINE		LIGHT POLE (LP)
	CATCH BASIN (DWCB)		POWER POLE WITH LIGHT
	DROP INLET (DI)		UTILITY POLE (PP)
	JUNCTION BOX (JB)		SPOT ELEVATION
	HEAD WALL (HW)		CONCRETE AREA
	CURB INLET (CI)		OVERHANG AREA
	FLARED END SECTION (FES)		RIP-RAP AREA
	OUTLET CONTROL STRUCTURE		COMMUNICATION BOX
	YARD DRAIN INLET		TRAFFIC SIGNAL BOX
	SS MANHOLE (MH)		BOLLARD (BO)
	CLEAN OUT (CO)		MAIL BOX
	CROSSWALK SIGNAL		SIGN
	SPOT ELEVATION		TREELINE



TerraMark Land Surveying, Inc.
1306 Balle Ferry Road
Marietta, Georgia 30151
Phone: (770) 421-1827
Fax: (770) 421-0552
www.TerraMark.com
Professional Land Surveying C. D. A. #LSF000810



AREAS OF SIGNIFICANT OBSERVATION AND POSSIBLE ENCROACHMENTS

- AREA OF ENCROACHMENT
1. COMMUNICATION, ELECTRIC AND STORM LINES CROSS PROPERTY LINE
2. GAS LINE CROSSES PROPERTY LINE
3. STORM LINE CROSSES PROPERTY LINE
4. OVERHEAD ELECTRIC LINE CROSSES PROPERTY LINE
5. STORM DRAINAGE AND OVERHEAD ELECTRIC LINES CROSS PROPERTY LINE
6. WALL CROSSES PROPERTY LINE
7. FOUR FOOT CHAIN LINK FENCE CROSSES PROPERTY LINE
8. DILAPIDATED FENCE CROSSES PROPERTY LINE
9. DILAPIDATED HOEWEE FENCE CROSSES PROPERTY LINE
10. SIX FOOT WOOD PRIVACY FENCE CROSSES PROPERTY LINE
11. CONCRETE WALL CROSSES PROPERTY LINE
12. CONCRETE WALL CROSSES PROPERTY LINE
13. WALL, GRAVEL AREA AND HAMMOCK CROSS PROPERTY LINE
14. COMMUNICATION LINE CROSSES PROPERTY LINE
15. PATH CROSSES PROPERTY LINE
16. GRAVEL WALK CROSSES PROPERTY LINE
17. STORM LINE CROSSES PROPERTY LINE
18. CONCRETE WALK CROSSES PROPERTY LINE
19. SANITARY SEWER LINE CROSSES PROPERTY LINE
20. STORM LINE CROSSES PROPERTY LINE
21. FENCE CROSSES PROPERTY LINE

UTILITY NOTES

THE UNDERGROUND UTILITIES SHOWN HEREON ARE BASED ON LOCATION OF MARKINGS PROVIDED BY:

RHD SERVICES, INC.
P.O. BOX 813399
MARIETTA, GA 30081
PHONE: 404-874-8585
ATTENTION: RYAN FRENCH

THE UNDERGROUND UTILITIES (EXCEPT THE LOCATION OF EXISTING DRAINAGE, SEWER, AND IRRIGATION UTILITIES AS WELL AS UNDERGROUND STORAGE TANKS) WERE LOCATED BY UTILISURVEY, LLC, UTILIZING RADIO FREQUENCY TECHNIQUE AND IN ACCORDANCE TO LEVEL "B" UTILITY LOCATION CRITERIA. THIS TECHNIQUE IS CAPABLE OF LOCATING METALLIC UTILITIES AND TRACER WIRES. ANY NON-METALLIC UTILITIES (WITHOUT TRACER WIRE) ARE NOT LOCATED.

THE SURVEYOR MAKES NO GUARANTEES THAT THE UNDERGROUND UTILITIES SHOWN COMPRISE ALL SUCH UTILITIES IN THE AREA. EITHER IN SERVICE OR ABANDONED. UNDERGROUND UTILITIES NOT OBSERVED OR LOCATED UTILIZING THIS TECHNIQUE MAY EXIST ON THIS SITE BUT ARE NOT SHOWN, AND MAY BE FOUND UPON EXCAVATION. THE SURVEYOR FURTHER DOES NOT WARRANT THAT THE UNDERGROUND UTILITIES SHOWN ARE THE EXACT LOCATION INDICATED ALTHOUGH THE SURVEYOR DOES CERTIFY THAT THEY ARE LOCATED AS ACCURATELY AS POSSIBLE FROM INFORMATION AVAILABLE.

INFORMATION REGARDING MATERIAL AND SIZE OF UTILITIES IS BASED ON RECORDS ACQUIRED FROM THE UTILITY OWNERS.

Project No.	2022-182	No.	1	Date	08/10/2022
Surveyor	AA, SH	#1	ADDRESSED COMMENTS	Date	08/10/2022
Drawn By	JW/TG	#2	ADDED UTILITIES AND UPDATED TITLE NOTES	Date	08/22/2022
Approved By	PBC	#3	ADDED PROPOSED R/W LOCATION (AMSTERDAM WALK)	Date	09/25/2023
Date	07/16/2022	#4			
Scale	1"=40'	#5			
		#6			
		#7			
		#8			
		#9			
		#10			
		#11			
		#12			
		#13			
		#14			

ALTANPS LAND TITLE SURVEY FOR PORTMAN HOLDINGS, LLC & FIDELITY NATIONAL TITLE INSURANCE COMPANY (AMSTERDAM WALK) LOCATED IN LAND LOTS 54 & 55, 17TH DISTRICT CITY OF ATLANTA, FULTON COUNTY, GEORGIA